

Magic Card Plus
User Manual

Rogev Computers LTD
<http://www.rogev.com>
Tel: 972-9-7469155
Fax: 972-9-7469196

<i>Copyright</i>	2
Important notice for user	2
Chapter 1 introduction	3
1-1 Scope of application	3
1-2 Features	4
Chapter 2 installation	6
2-1 System requirements	6
2-2 Pre-installation Guidelines	6
2-3 Installation	7
Chapter 3 Using Magic Card	9
3-1 Definitions of terms	9
3-2 Operation Wizard	11
3-2-1 Main menu	11
3-2-2 Configuration Menu	13
3-2-3 Setting Protection	14
3-2-4 Functions	15
3-2-5 About	17
Chapter 4 Uninstall	13
4-1 Uninstall Magic Card kernel	18
4-2 Physically uninstalling Magic Card	18
4-3 Uninstall the driver	18
Chapter 5 FAQ's	19

Copyright

Rogev Ltd has the authority to alter the content of this manual at any time without prior notification. Except as noted, all companies, persons, materials mentioned in this manual are fictitious. No part of this manual shall be reproduced or translated by any means without the express written permission of Rogev Ltd.

Rogev Ltd owns or has applied for patents covering the intellectual property rights contained in its application, trademark, copyright and files.

Important Notice for Users

Before you install **MAGIC Card**, please backup all of your files and make sure that it is stored separately. Rogev Ltd shall not be liable for any damage resulted from the installation of **MAGIC Card**.

Chapter 1 Introduction

Our company specializes in the provision of comprehensive computing solution to organizations, institutions and educational facilities

We have developed a protection card that protects your PC from deliberate or accidental deletion of files.

Our **Magic Card** offers a reliable, inexpensive, user friendly and effective solution to this problem. Just add the **Magic Card** on a free ISA / PCI slot and you are protected. No matter how you delete or format the hard disk , just reboot the computer and the data is restored back to its original status . Besides , even if CMOS was modified , **Magic Card** can auto-detect and restore it instantly.

1-1 Scope of application

■ Single PC user Market:

- ✓ Protects data even when the operating system is destroyed, everything will be restored by re-booting your computer.
- ✓ Prevents viruses from destroying the operating system
- ✓ Protects your computer from unwanted downloaded software.

■ Enterprise Market:

- ✓ Internet cafes, Computer classrooms, administration and training centers.
- ✓ No need to worry about any settings being changed.
- ✓ Prevents viruses from destroying the operating system.

■ Educational Market: Computer classrooms and administration.

- ✓ Allows students to activate the most critical system

commands.

- ✓ Frees classroom administrators from spending time restoring computers.

1-2 Features

■ Express installation and Keeps Original Data

Quick and easy installation with three **Enter** keys the original operating system, application programs and data in drive C: and all extended data partition D:, E:, F:... will be kept unchanged.

■ Integrated Software.

- The recovery software is integrated in a PCI expansion card which can not be destroyed by any kind of software operation.

■ Instant Protection

Once installed, the card provides immediate protection without repartitioning the hard disk or reinstalling the operating system.

■ Configurable protection

Users can configure which partitions should be protected, allowing more flexible protection.

■ CMOS Protection

CMOS protection ensures your CMOS settings. A warning message will appear the moment CMOS changes occur.

■ Outstanding Protection and Recovery

Even with a corrupted operating system, MAGIC Card will function properly.

■ Authorization Management

Provides password management, and allows administrators and users to work in different modes.

■ Uninstalling Function

You can uninstall the MAGIC Card and not damage the data stored on the hard disk. The hard disk will return to the last status you have configured the computer. There will be no damage to the hard disk after you uninstall the card.

■ Virus Protection

If your computer was infected by any kind of virus, all you have to do is either restore or reboot your computer and all viruses will disappear.

■ Data Saving

MAGIC Card can save the current status to protect your data.

■ Instant Recovery

Instant recovery time. The card will restore and recover your system in no time at all.

■ Various Recovery Modes

MAGIC Card provides various recovery modes that meet your requirements, such as non-recovery, automatic recovery, manual recovery and scheduled recovery.

■ Minimum Hard Disk Space for Installation

MAGIC Card requires only 80K byte disk space for installation.

Supports All Windows Operating Systems

MAGIC Card supports DOS- Windows9x/Me, Windows NT/ 2000 and Windows XP.

■ Supported File Formats

MAGIC Card supports BIGDOS, FAT16, FAT32 and NTFS.

■ Supported Hard Disks

MAGIC Card Supports SCSI, EIDE, IDE hard disks. ATA33, ATA66 ,ATA100 and S-ATA are supported.

Chapter 2 Installation

2-1 System requirements

CPU: 486 or above

Memory: 16M or more

Hard-disk: IDE, EIDE and SCSI

2-2 Pre-installation Guidelines

Prior to installation, please follow the guidelines listed below to insure a safe and quick installation:

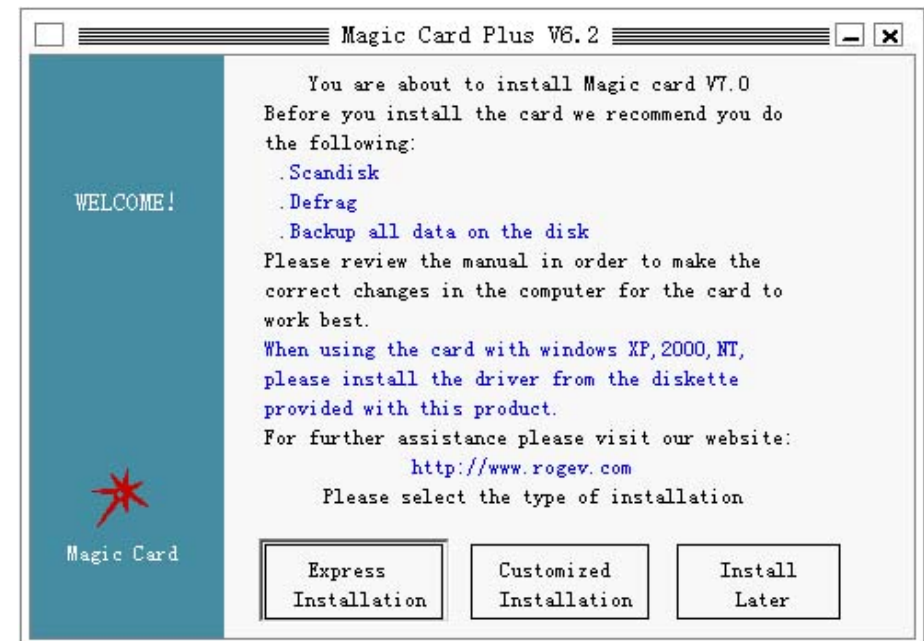
- ✓ Check CMOS to verify your hard disk parameters. Magic Card supports the first physical disk only.
- ✓ In CMOS disable virus warnings
- ✓ Run a complete anti virus scan to ensure that the computer has no viruses.
- ✓ Run SCANDISK
- ✓ We strongly recommend defragging your hard disk; this will increase your computer performance.
- ✓ Set your Virtual Memory to a partition other than "C": (or to any other partition you will not protect)
- ✓ Set Internet Temporary Files to a partition other than "C": (or to any other partition you will not protect)
- ✓ Disable real-time virus monitoring and CD ROM Drivers in config.sys and autoexec.bat.
- ✓ Uninstall system recovery software and disk utilities such as Norton Utilities
- ✓ When installing the card in a computer with windows XP, disable System Restore. To do so, right click on "My Computer"> Properties> System Restore> and check the box "Turn off System Restore on all drives".

✓

2-3 Installation

2-3-1 Install Magic Card (the hardware)

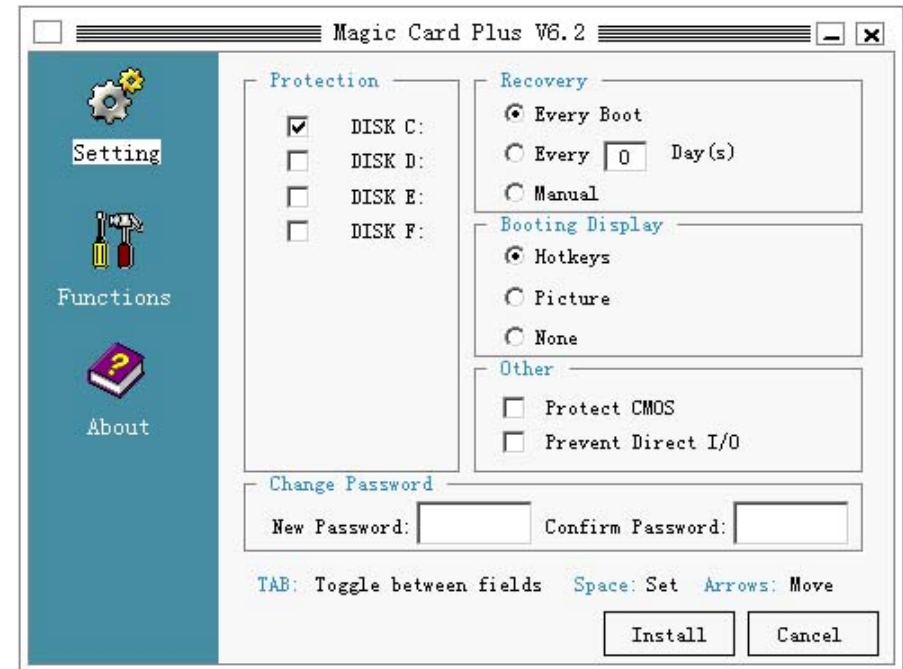
1. When installing Windows NT/2000/XP, please logon as administrator, and run "SetupNT_XP.exe" from the diskette provided with the card.
2. For any other operating system, please start from this stage
3. Open computer box
4. Insert card in to free PCI or ISA slot
5. Turn on computer
6. Restart your PC, a installation screen will be displayed



as in Figure 1.

(Figure 1: Installation Screen)

- ✓ Selecting Express Installation will install Magic Card with its default settings:
 - Protected Drive: Drive C: only
 - Recovery Mode: Every Boot
 - Booting Display: HotKeys
 - Protect CMOS: No
 - Prevent Direct I/O: No
 - Password: Enter Key
- ✓ If you select Customized Installation, the following System Configuration screen (**Figure 2**) will be displayed.
- ✓ Select the desired parameters and press the Enter key. This will install and save the Card with the parameters you set. For information on how to configure the card, please refer to Chapter 3.
- ✓ The computer will reboot automatically.



(Figure 2: Customized Installation)

Chapter 3 Using Magic Card

3-1 Definitions of terms

- **Open Mode:** Magic card is disabled; any changes made by user will be stored on disk. When using this mode there is no way to return to the previous configuration. We do recommend using this mode when major changes are required.
- **Protected mode:** Magic card is enabled. Any changes made, on the protected partition, by the user will be stored

till next restore.

- **Configuration:** system administrator can change working modes, parameters and other settings in this screen.
- **Save Changes:** Saves all changes made in the operating system in protected mode.

Note: There are four operations that need a password:

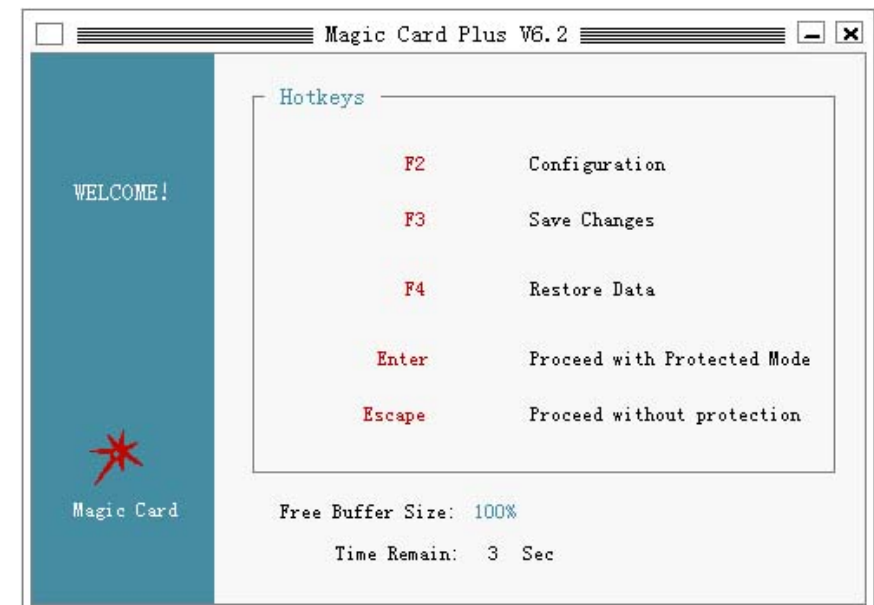
- ✓ Save Changes
- ✓ Configure the card (including Uninstall)
- ✓ Restore Data when in Manual recovery mode
- ✓ Boot the computer with “Open mode”

3-2 Operation Wizard

3-2-1 Main Menu

When booting a computer with MAGIC card installed, the following **Main Menu** will appear (Figure 3):

(Figure 3: Main Menu)



- ✓ When ‘Booting Display’ is set to ‘None’, the Main Menu will be hidden. **You can press any one of the hotkeys to activate any of the functions even though the menu is hidden, or press Spacebar while the computer boots in order to see the hidden Main Menu;**
- ✓ When ‘Booting Display’ is set to ‘Picture’, a picture

will be displayed. The picture has to be a 24bit true color bitmap file named FLASH.BMP and has to be placed in the root directory of drive C. All hotkeys are functional when the picture is displayed.

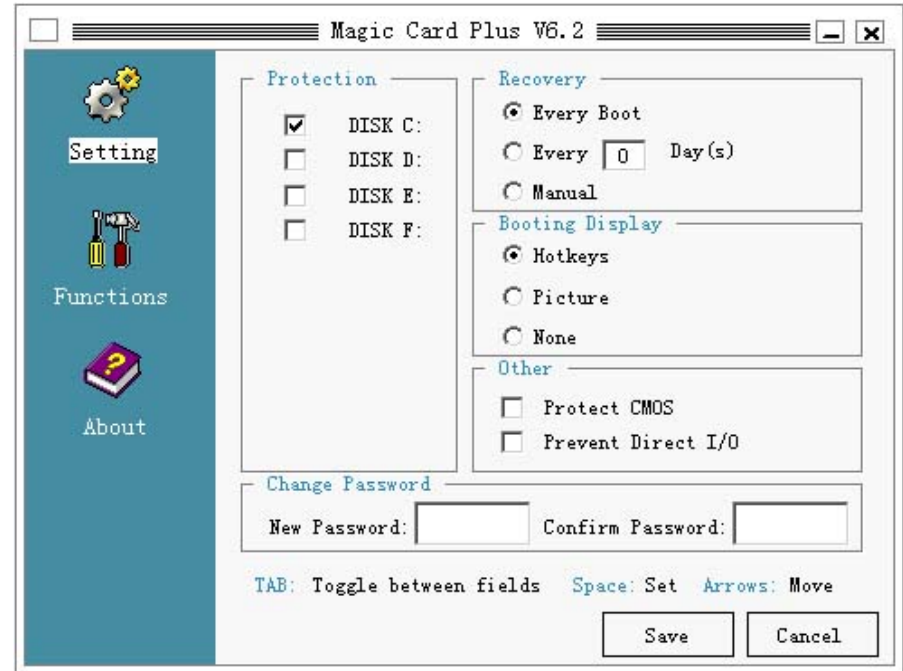
- ✓ Pressing the Spacebar will stop the countdown.
- ✓ The time for displaying the main menu or the customized picture (FLASH.BMP) can be set in the configuration screen.

Hotkey definitions:

- ✓ Press **Enter** key to proceed in Protected Mode.
- ✓ Press **Esc** key to proceed in Open Mode.
- ✓ Press **F2** Key to enter Configuration Menu.
- ✓ Press **F3** key to save the changes you made to an existing configuration..
- ✓ Press **F4** key to recovery all changes since last saving operation. This option is valid only when the recovery mode is set to **'Manual' Mode**.

3-2-2 Configuration

The **Configuration Screen** (Figure 4) will display if **F2** pressed on the **Main Menu**



(Figure 4: Setting)

There are three icons in the Configuration screen: Setting, Functions and About. In these screens, pressing the **Tab** Key allows you to move between fields, press the **Space Bar** to modify or set parameters, and press **Up/Down arrow keys** to move between items.

3-2-3 Setting

Protection: You can set which drive(s) should be protected. Press the **Space Bar** to set and press the **UP/Down arrow keys** to move between drives. When the box next to the drive is checked (☑), the drive is protected.

Recovery: you can set recovery mode to

- ✓ **Every Boot:** On every boot a recovery function will recover automatically;
- ✓ **Every X day(s):** Every X day(s), a recovery function will be executed automatically;
- ✓ **Manual:** No recovery function will be executed automatically unless executed manually. By pressing **F4** hot key on the Main Menu or selecting Restore function on the **Function Screen**.

Booting Display: You can set what can be displayed while the computer boots:

- ✓ **HotKey:** A Hotkey Screen (Figure 3) will be displayed while the computer boots.
- ✓ **Picture:** A 24bit true color picture will be display on boot. The bitmap picture file has to be placed in the root of drive C:, the file name has to be FLASH.BMP.
- ✓ **None:** No Magic Card screen will be displayed on boot;

Protect CMOS: If this item is checked, CMOS setting will be protected. When CMOS setting is modified in protected mode, you will be asked if to restore the CMOS setting.

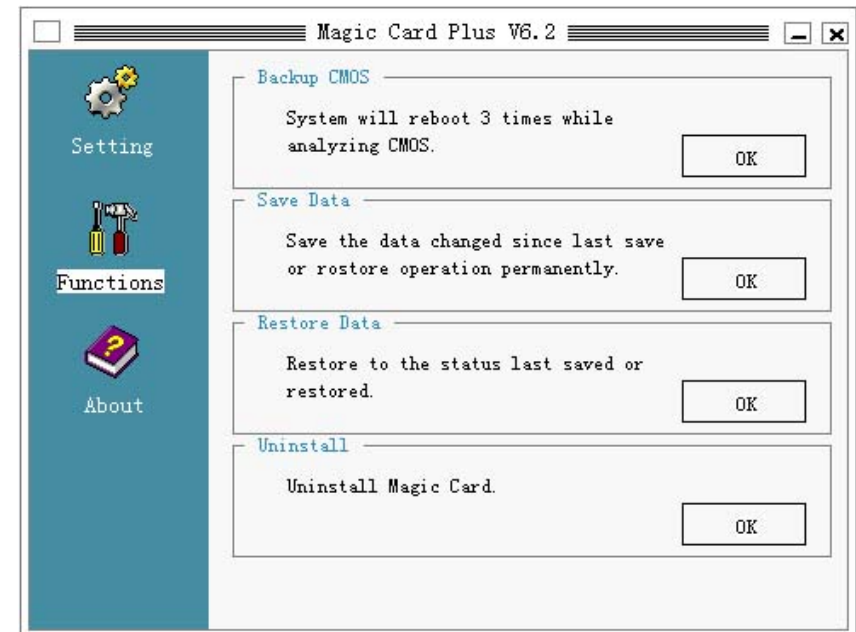
Prevent Direct I/O: If this item is checked, direct I/O access to hard disk is not allowed.

Change Password: You can change and confirm your password here.

3-2-4 Functions

When **Functions** icon is selected, following **Functions Screen** (Figure 5)

will be displayed:



(Figure 5: Functions Screen)

Backup CMOS: System will reboot 3 times while analyzing and saving CMOS data. If 'Protect CMOS' configuration item is checked, CMOS setting will be restored to this saved status if changed in protected mode.

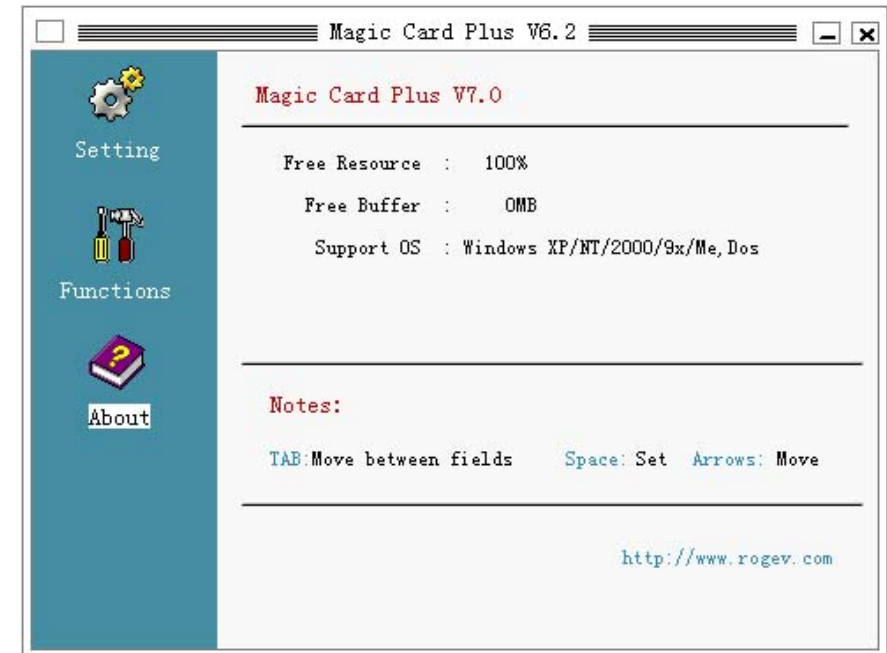
Save Data: Save the changed data on the protected drive(s) permanently.

Restore Data: Restore the drive(s) to the last protected status.

Uninstall: Uninstall the Magic Card.

3-2-5 About

When the **About** icon is selected, the screen will display information about the Magic Card.



(Figure 6: About)

Chapter 4 Uninstall

Removing the Magic card will not damage the data on your computer.

4-1 Uninstall Magic Card kernel

In Functions Screen (Figure 5), choose <Uninstall> command, the following message will appear: "Prepare to uninstall Magic Card? [N]" , press "Y" to uninstall the card, or press "N" to cancel and leave the card installed

4-2 Physically uninstalling Magic Card

Removing the Magic Card from the PCI slot will physically uninstall the Magic Card .

4-3 Uninstall the driver:

Run Uninstall.exe to uninstall the driver for Magic Card.

Chapter 5 FAQs

5-1 General Questions:

1. How does *Intelligent Recovery Technology* work?

A: *Intelligent Recovery Technology* works by recording changes made to the HDD, thus it only requires a small amount of HDD space to operate.

2. Is it easy to install?

A: Yes. It is "Plug and Play".

3. Is **Magic Card** Y2K (Year 2000) compliant?

A: Yes.

4. Can **Magic Card** be upgraded?

A: Yes. You can download the upgrades from our website (www.Rogev.com)

5. Can **Magic Card** coexist with integrated or "software" modems?

A: Yes. There are no known conflicts.

6. Where have **Magic** cards been used?

A: **Magic Card** are installed in places such as universities, colleges, school computer labs, libraries, R & D Centers, educational labs, training centers, Internet kiosks, Corporate sectors, Government sectors and private enterprises etc.

7. Why those places?

A: Many different users access the computers all the time. **Magic Card** will protect the computer's operating system and application software against modifications, tampering, and viruses

8. My computer already has an operating system. Do I have to reinstall again if I use **Magic Card**?

A: No. **Magic Card** keeps your operating system.

9. There are other software only solutions in the market. What makes **Magic Card** special and why does it require a hardware card?

A: Software solutions can easily be bypassed and cannot offer any real protection. The **Magic Card** hardware card can protect against such intrusion or corruption by intercepting them before the operating system or at the hardware level.

10. Why do software solutions offer protection only to the operating system?

A: Software solutions are specifically written for an operating system. If the operating system is not running, the software solution cannot operate. Furthermore the BIOS/CMOS settings can't be protected by Software solution since it starts before any operating system.

11. Can **Magic Card** protect the BIOS/CMOS settings?

A: Yes. It will automatically restore to the last configuration when any of the settings are tampered or corrupted.

12. Why should I protect the BIOS/CMOS settings?

A: If the BIOS/CMOS settings are corrupted, your computer may hang or not boot at all.

13. Can you assure me that **Magic Card**'s password is secure?

A: Yes. **Magic Card** password is encrypted.

14. What is "Open mode"?

A: "Open mode" in this mode, whatever changes made (editing/deleting/moving/renaming files, installing/upgrading/removing software, etc.) will stay permanently.

15. What is "Protected mode"?

A: "Protected mode" in this mode, whatever changes made (editing/deleting/moving/renaming files, installing/upgrading/removing software, etc.) are temporarily saved and when rebooted, everything returns back to the last saved status.

16. Can someone really FORMAT/FDISK the HDD under "Protected mode"?

A: No. It is impossible even in real DOS mode. If one tries, everything will be restored back to its last saved configuration.

17. How can I format my HDD without removing **Magic**

Card ?

A: You can format your HDD under Open Mode only.

18. I am using **Magic Card**, can I upgrade from Windows 98 to Windows 2000.

A: Yes, Magic Card supports all Windows operation systems.

19. If the **Magic Card** is corrupt or I remove the **Magic Card** without uninstalling it, will the data on hard disk be damaged?

A: No. The data on hard disk will be restored to the status last saved. The changes you made to the protected drive(s) after last saving will be deleted.

20. Does **Magic Card** support partition tools other than FDISK?

A: Yes.

5-2 Installation Questions

1. Before installing Magic Card, are there any steps to perform?

A: Please run Windows Scandisk, Disk Defragmenter and an anti-virus software.

2. Why do I have to run Scandisk before installing **Magic Card**?

A: Before any installation, the HDD must be checked for errors. This is to ensure that all the original information, which **Magic Card** will use for restoration, is in good condition.

3. Why do I have to defrag the HDD before installing **Magic Card**?

A: Because **Magic Card** occupies the last sectors of your HDD. If there are any files occupying these sectors, it will be moved by defragmenter, otherwise it will be overwritten during installation.

4. Which PCI expansion slot should I use?

A: Any free expansion slot will do.

5. The **Magic Card** menu does not appear. What should I do?

A: In the BIOS/CMOS settings disable virus warning and select NETWORK/LAN as the first boot device. For some older BIOS, enable "option ROM".

6. Do I need to install extra driver after installing **Magic Card**?

A: Under Window9x and Windows Me, you don't need to install any driver provided the OS is installed in Drive C. For Windows NT/2000/XP, you'll need to run "SetupNT_XP.exe" located in the driver disk to install the driver either before or after installing Magic card.

7. An exclamation mark (!) appears on "IDE controller" in Windows "Device Manager" after installing **Magic Card**. Why?

A: This may occur under "Windos9x" and "Windows Me". Normally, **Magic Card** will install driver for Windows9x and Windows Me automatically. In the event that a different version of **Magic Card** was ever installed, **Magic**

Card may fail to install the driver. In this case, you must run the file "Setup9x.exe" located in the driver disk under Open Mode.

The conflict between **Magic Card** and the IDE driver supplied by the motherboard manufacturer may cause the exclamation mark. Uninstall the IDE driver supplied with the motherboard and install the standard IDE driver supplied with Windows9x or Windows Me.

8. How do I protect the BIOS/CMOS settings with **Magic Card**?

A: Enable "Protect CMOS data" in Setting Screen. But before you do this, execute "Backup CMOS data" first.

9. After I installed **Magic Card**, the data on hard disk is not protected under Windows NT/2000/XP, why?

A: You must have forgotten to install the driver. Please run SetupNT_XP.exe driver installer located in the driver disk.

10. After I uninstalled Magic Card recovery card, the system alarms with low-high-low-high beeps when starting Windows2000/NT/XP, why?

A: It's because the driver for Windows2000/NT/XP was not uninstalled after removing **Magic Card**. Please uninstall the driver with uninstall.exe.

11. I forget the password ! What can I do?

A: Password is for security purposes. There is no way to retrieve it if you forgot it. In this case, you will have to physically remove the **Magic** card, then execute password

removal utility Clear.exe located in the driver disk under pure DOS environment, then re-install **Magic** card. When **Magic Card** is physically installed, the Clear.exe will not operate.

Notes