

Magic Card

User's Manual

Ver.WOL/PCI/NT

1. <i>Quick Installation Guideline</i>	3
Useful Hotkeys.....	4
2. <i>First time installation</i>	5
2-1 Start Installation	5
2-2 Hard Drive Partitioning.....	6
2-3 How to calculate drive space usage	9
2-4 Setup Menu	10
2-5 Boot Menu	10
2-6 Installing Operating System and Software	11
2-7 Boot Disk Tool.....	11
3. <i>Password Setup</i>	12
3-1 Supervisor Password	12
3-2 Teacher Password.....	12
3-3 Restore Password	12
4. <i>Option Setup</i>	13
4-1 User mode prompt boot form C.....	13
4-2 Auto Restore CMOS Data.....	13
4-3 Safety Value	14
4-4 Hard Disk Cache Size.....	14
4-5 Default Select.....	14
4-6 Auto Select.....	16
4-7 Force Select.....	16
4-8 Auto power off	16
4-9 Receive connect instruction.....	16
5. <i>Disk Setup</i>	17
6. <i>Tools</i>	17
6-1 HDD COPY form IDE	18
6-2 HDD COPY from LAN.....	18
6-2-1 Logging In.....	18
6-2-2 Wake up On LAN	19
6-2-3 Sending Data.....	20
6-2-4 Network Commands.....	22

6-5 Analyze CMOS Data.....	23
6-6 Z.E.N. Works	24
6-7 Schedule Maintenance Utility	24
7. <i>FDISK Setup</i>	25
8. <i>Upgrade Magic Card</i>	26
9. <i>Uninstall Magic Card</i>	26
10. <i>Tips & Tricks</i>	26
11. <i>NT ver. Instant Recovery Installation</i> <i>Guideline</i>	28

1. Quick Installation Guideline

There is a simple step-by-step installation guideline for your reference to complete the installation process. Suppose I have Win-98 and some other applications and data with 3.0 GB in Drive C: installed already in my 13.0GB HDD.

1. I bought an original Magic Card from a computer dealer.
2. I ran Scandisk the HDD by "standard scandisk" provided by Win-98 to make sure there has no bad sectors inside. Make sure there has no virus in the HDD.
3. **I ran Defrag program provided by Win-98 for best performance.**
4. I powered off the PC and plugged Magic Card in a free PCI expansion slot.
5. I powered on the PC, I saw the first time install instruction guideline with HDD information shown on the screen. Clicked Y to next.
6. Here I saw 3 selections for partitioning & installation. "Start install", "HDD COPY", "HDD COPY from Network".
7. I selected "Start install" and "Yes, keep the data".
8. I saw FDISK menu shown on the screen with SYSTEM in "Name" and FAT32 in "File System" and 3000MB in "Size" listed in No.1 column.
9. I allocated **370MB** for Buffer zone.
10. I clicked | and **Save** the settings. PC restarted.
11. I pressed b+ e to go into Supervisor Mode (**Default Password is e**) to install for 32 bit driver (Insert install diskette in Floppy Drive again. To run **Setup.exe**).

That's it.

? **Important Information**

1. Unable to boot after the operation system had completed the installation?

When creating several boot partitions, please put DOS and NT partitions as far in front as possible. This is because when they are placed after the 2GB limit of the hard drive itself, they might not be able to boot. This problem is internal to the operating system itself, and Magic Card has the ability to fix this problem.

Simply select the partition that needs the repair, press **t** to start "Boot Disk" function, and use "Fix DOS Boot Sectors" or "Fix NT Boot Sectors" according to your need.

2. When using Instant Recovery, Hard Drive showing "!" in WindowsXX.

You can simply run "Setup.exe" in the Magic Card utility, and it will solve that "!" problem as well as allowing you to use 32bit driver mode. (Please remember to do this when you have activated "Supervisor Mode" or the "Instant Recovery" feature will wipe out the change.)

3. Please establish the idea of separating the "operating system" and "data" into different partitions. Only system and application software needs to be installed into the C drive, so you would only need a small C drive, and store the rest of the data onto the data partition instead.

◆ Useful Hotkeys

- | | |
|----------------|---|
| (1) u | Enter "Setup Menu" |
| (2) b+f | Entering Instant Recovery partition's "Supervisor Mode" |
| (3) b+B | Execute boot partition's "Backup" Function. |
| (4) b+R | Execute boot partition's "Restore" Function. |
| (5) t | Boot Partition Utility |

booting when setting instant restoration mode.

2. First time installation

2-1 Start Installation

1. Power off the computer first and plug Magic Card in a free PCI expansion slot. Restart the computer and continuing step 3 for further installation.
2. If the screen did not show the picture as step 3, please press **[Ctrl+H]** to adjust the Hardware setting mode. The default password to access the hardware setting is e. **Hardware Mode: Normal**, Disable, Mode 1, Mode 2, Mode 3, Mode 4 and Mode 5.
Adjust a matched mode to see the Magic Card installation setup menu. Please select one mode that can make Magic Card be detected, while Magic Card malfunction.
All Magic Card function will not work if choose "Disable"
Hardware Password: To change Magic Card hardware password.
Hot key Hint: Default value is "Enable".
SNCOPY Group: setup the SNCOPY Group.
SNCOPY Login Name: setup the login computer name.
3. First time installation information will be shown, and press e to show Hard Disk information. Please insert the installation diskette into floppy A. Press **Y** to start install. After restarting the computer, first time install would show the following menu, choose "Start install" and you will be able to partition the hard drive

Install
Start install
HDD COPY
HDD COPY from Network

Keep Destroy

4. Choose **“Keep”** and all the data in Disk C will be kept. Choose **“Destroy”** and all the data in Hard Drive will be destroyed. The Hard Drive will have to be re-partitioned. **Note: Magic Card can only keep the data in Drive C. All the other Disks (D, E) will be destroyed.**

5. However, if there is no “Keep” message shown, it means the original file system is unable to be recognized. Therefore the data in drive C cannot be kept.

2-2 Hard Drive Partitioning

FDISK							
NO	Name	Password	Type	Restore	Attrib.	File System	Size
1	[WIN98]	[]	Instant	Manual	System FAT32 [3000]MB
2	[]	[]	Backup	Manual	Share FAT16 [600]MB
3	[WIN98]	[]	Normal	Daily	Private FAT32 [1030]MB
4	[WIN2000]	[]	Instant	Every	System NTFS/HPFS [2000]MB
5	[WIN95]	[]	Instant	Every	System FAT32 [1000]MB
6	[]	[]	Normal	Manual	Share FAT16 [4500]MB
7	[]	[]	Normal	Manual	System FAT16 []MB
8	[]	[]	Normal	Manual	System FAT16 []MB
9	[]	[]	Normal	Manual	System FAT16 []MB
10	[]	[]	Normal	Manual	System FAT16 []MB
Describe							
Buffer :370MB			Free 0MB				
f{}: Modify +-: Inc./Dec. Buffer !:Description :Exit Ver:X.XX							
ROGEV COMPUTERS							

◆ Details

1. If a boot partition needs to be larger than 2GB, for proper configuration, you will need to set it as FAT32, and use FAT32 supporting operating system to start the system.
2. If you "Keep" the original boot partition, then the first entry will automatically be set to "SYSTEM". You will be able to shrink the size of that partition according to the space requirement of other partitions that you will be creating.

Warning: When shrinking the boot partition, you will need to

partition's information.

3. You can now set each partition's name, password, Recovery Type, Restore method, Attribute, File system and Size. And only drives with the "Size" field set properly will be displayed in bright text. Indicating that the setting is valid and the partition will be operational. **Please be noticed, once "Size" field is set, you will NOT be able to change it, thus please plan ahead.**
4. **Recovery Modes:** Supports "Instant Recovery", "Backup Recovery" and "Normal Recovery".

Instant Recovery: This mode allows the fastest recovery time. However, it is less efficient during normal machine operation. When installing software/operating system on partition set to Instant Recovery, you will need to enter "Supervisor Mode".

Backup Recovery: When using "Backup Recovery", it will reserve a buffer zone that is equal in size to the protected partition. It uses more space, but have better speed and compatibility.

Normal Recovery: Do not have any recovery ability, when using this mode; the speed and compatibility would be identical to when Magic Card isn't installed. This mode is suitable for LAN surrounding.

- Note1: Partition set to Instant Recovery can still be set to "Normal Recovery" mode, and vice versa. "Backup Recovery" partition can also be set to any of the recovery mode.

Instant Recovery <-> Normal Recovery.

Backup Recovery <-> Instant Recovery <-> Normal Recovery.

- Note 2: When choosing between different boot partition at boot time, and both partition being in Instant Recovery mode. Then the prior partition will be automatically restored.
- Note 3: Boot partitions and data partitions can both have protection and recovery ability, however, when using different boot partitions, there are some combinations that needs attention.

Boot Disk	Instant Recovery	Backup Recovery	Normal Recovery
-----------	------------------	-----------------	-----------------

	Partition setup		
--	--------------------	--	--

5. **Automatic Recovery:** Can be set to "Manual/ Every boot/ Daily/ Weekly/ Monthly". Which means that at every boot (Every)/ Day / Week/ Month's "first" boot, it will perform automatic restore of data.
6. **Auto Clear Data disk :**Support FAT16 / FAT32 File System, Setup : In ?Restore?, select (Auto Cls), Data Disk will be cleared automatically by (Every/ Daily/ Weekly/ Monthly)?
7. **Attribute:** Can create "System", "Share", "Private" and "None" partitions.
 - **System Partition:** You can install operating system on this partition, and during boot time, all the boot partitions will be listed for you to choose from. All boot partition are independent from one another, so you need not to worry about one operating system interfere with another operating system.
 - **Share Partition:** This kind of partition will be visible no matter which boot partition you choose to boot from. Excellent for sharing data between different operating systems. (Documents, etc)
 - **Private Partition:** This kind of partition will only be visible to boot partition of the same name. It will be invisible when booting from any other partitions. Excellent for keeping constantly changing data that is exclusive to one operating system. (Logs, etc)
 - **None Partition:** Set the partition to "Unused Partition".
 - Note: Every boot partition can see up to 29 (twenty-nine) data partition at once, however you can set the file system of the data partition to "Extended" and use FDISK to further partition that data partition to your desire.
8. **File System:** Supporting all kinds of file systems, please set it

installation, please set the size of the partition according to your requirement.

10. **Buffer:** For use with "Instant Recovery" type boot partition, the size of the buffer zone is determined by the disk usage. More access more often would mean that you would need a larger buffer zone. It is highly recommended that the "Swap" file and "temp" file of Windows and other OS to be placed in "No Recovery" shared data partition to increase efficiency and reduce the size requirement of the buffer zone.
 - **Note: Under Instant Recovery Mode, recommended buffer zone value to be 370 MB.**
11. After the setup is done, press | and choose "Save" to save your setup.
12. Now reboot your machine, when the startup check is done, Magic Card will show you all the boot partition for you to choose from. You can now install software and operating system in each one of them. Below details the steps needed to install operating system onto each type of partition.
 - . **Instant Recovery:** Put boot disk in A: ? Select the desired partition with **b+f** to enter Supervisor Mode ?
Format C: ? Install OS and software ? Install setup driver ? Reboot ? Done.
 - . **Backup Recovery:** Put boot disk in A: ? Select the desired partition with **f** ? Format C: ? Install software ?
Reboot ? Select the partition again with **b+B** to backup the current partition's data ? Done
 - . **Normal Recovery:** Put boot disk in A: ? Select the desired partition with **f** ? Format C: ? Install software ?
Reboot ? Done.

- of all "Instant Recovery" partition size + Buffer Zone.
- 2. Every "Backup Recovery" partition will use an identical size of hidden buffer zone for backup purpose. So the total space usage of "Backup Recovery" partition will simply be double the size of the boot partition itself.
- 3. "Normal Recovery" partition will have no any buffer zone needed.

2-4 Setup Menu

After the hard drive is partitioned, the following "Setup Menu" will be shown

Setup
Password
Option
Disk
Tools
FDISK
Upgrade
Uninstall
About

If you want to enter " Setup Menu" in the future, simply press **U** in the "Boot Menu" and then entering the "Supervisor Password" will be it.

2-5 Boot Menu

"Boot Menu" will then show up when rebooting after the hard drive partitioning is completed. Now you can choose one of the boot partitions as the C drive for this boot. Now, the basic installation of Magic Card is completed!



2-6 Installing Operating System and Software

After the "Boot Menu" shows up, you can then follow the normal installation procedure for software installation; however, there are a few things that need to be remembered.

1. "Instant Recovery" partitions will REQUIRE you to enter "Supervisor Mode" by pressing **b+f** for installing software.
2. "Backup Recovery" partitions will REQUIRE another reboot, and in the "Boot Menu" you will NEED to select the same partition again and press **b+B** for backing up the data/program on the boot partition.

2-7 Boot Disk Tool

1. **Default Select:** This option will allow you to choose which partition will automatically selected, requiring you to only press enter for starting your favorite operating system.
2. **Cancel Default Select:** This option will change the preset default partition to the "previously booted" partition.
3. **Force Select:** Set this computer to boot ONLY from the predetermined partition.
4. **Cancel Force Select:** Cancel the "Force Select" option.
5. **Fix DOS Boot Sector:** Fix DOS boot partition that can't boot when it is installed beyond the first 2GB of the hard drive.
6. **Fix NT Boot Sector:** Fix NT boot partition that can't boot when it is installed beyond the first 2GB of the hard drive.

- Note: selection 1 to 4 needs "Teacher Password", selection 5 and 6 needs "Supervisor Password".

3. Password Setup

Supervisor Teacher Restore
wy:Move fModify ^:EXIT

3-1 Supervisor Password

If you need to enter " Setup Menu", "Supervisor Mode", or execute "Backup" function, you will be required to enter the "Supervisor Password". Please "REMEMBER" this password and "NEVER" forget it.

And please note that with "Supervisor Password", a user can do "ANYTHING", so please make sure that people get access to this password only on a need-to-know basis.

3-2 Teacher Password

In boot partition's "Default Select" and "Force Select" setup will require Teacher password, since it is usually used by teacher of a computer class. (Entering "Supervisor Password" will work as well.)

3-3 Restore Password

If you need to restore a boot partition's data to the earliest state (Instant Recovery) or the last backed up state (Backup Recovery), you will need to enter this password. (Entering "Supervisor Password" is fine as well).

- Note: After the "Backup Recovery" partition had all the software installed and set up properly, you will need to reboot, select that partition again and press **b+B** to activate the "Backup" function. Later on, if you found that boot partition is no longer operational or infected with virus, you can simply reboot, select that partition and press **b+R** to restore to the last backed up state.

4. Option Setup

Option	
User mode prompt boot from C	Disable
Auto restore CMOS data	Disable
Safety value	First
Boot menu hotkey hint	Enable
Show brandname	Enable
S.M.A.R.T Report	Disable
Hard disk cache size	5K
Default Select	Last select
Auto select	Disable
Force select	Disable
Auto power off	Disable
Title	MOONSCAPE AS
Show logo	2 Sec.
Receive connect instruction	Enable

4-1 User mode prompt boot form C

Disable	Default Value
Enable	Boot only form drive C. Enhance more OS security.

4-2 Auto Restore CMOS Data

Disabled*	
Enable	CMOS DATA was modified, press any key to restore!
	F10 Save CMOS amended configuration settings
	F1 Ignore this (these) selection(s) from now on
	ESC Continuous pop-up this menu for selection in every rebooting.
<ul style="list-style-type: none"> Note: Because hard drive "type" information has a great effect on the operation of the hard drive, and if the information is wrong, it can cause great damages. Thus Magic Card will restore the hard drive setting no matter if this function is enabled or not. 	

4-3 Safety Value

First	Only provides recovery ability, but anti-cracking/security features are disabled
Second	Prevents program that call BIOS interrupt from sabotaging the data.
Third	Prevents program that from sabotaging the data.
Forth	Directly monitors hard drive I/O in real time, and if any abnormal operation is found, it will automatic halt computer's operation.
<ul style="list-style-type: none"> Note: Higher the security level, the lower the compatibility. 	

4-4 Hard Disk Cache Size

0 10KB (5KB)	To suit operation in all environments, Magic Card can allow user to set the size of hard drive cache. This can allow Magic Card to use as little as 5KB of main memory.
<ul style="list-style-type: none"> Note: Normally this setting is best left alone; the default size should suit the need of most people. 	

4-5 Default Select

Last select*	When booting the machine, the light-bar will automatically select the partition that the user last booted from.
Boot Partition Name	System administrators (Supervisor Password) can set the computer to choose the desired partition at boot, simplifying the operation of the machine.
<ul style="list-style-type: none"> Note 1: This function can be used in conjunction with Auto select. Note 2: Other than Supervisor Password, Teacher Password can also set this setting by pressing t. 	

4-6 Auto Select

Disabled	This will require the user to choose which partition to boot from, or the machine will wait infinitely.
1-99 seconds	Counts down the predefined seconds, and then automatically starts the partition that the Light-bar is currently on.
<ul style="list-style-type: none"> ▪ Note 1: This function is normally used in conjunction with "Default select". ▪ Note 2: Anytime during the count down, if a key press is detected, the count down will be stopped. 	

4-7 Force Select

Disabled*	
Boot Partition Name	This function can let the administrator or instructor to preset this computer to boot only from a predetermined partition.
<ul style="list-style-type: none"> ▪ Note: Both Supervisor and Teacher level password can press ↑ at the "Boot Menu" to change this setting. 	

4-8 Auto power off

Disabled*	Disable this function.
1~99 Minute	This function can let the administrator or instructor to tune off the computer after 1~99 minute(s).

4-9 Receive connect instruction

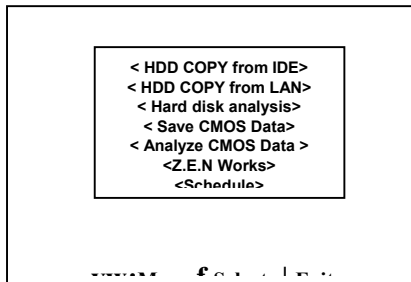
Disabled*	
Enable	Activate Local Area Network link waiting command.

5. Disk Setup

DISK							
NO	Name	Password	type	Restore	Attrib.	File System	Size
1	[WIN98]	[]	Instant	Manual	System FAT32 [3000]MB
2	[]	[]	Normal	Manual	Share FAT16 [600]MB
3	[WIN98]	[]	Normal	Daily	Private FAT32 [1030]MB
4	[WIN2000]	[]	Instant	Every	System NTFS/HPFS [2000]MB
5	[WIN95]	[]	Instant	Every	System FAT32 [1000]MB
6	[]	[]	Normal	Manual	Share FAT16 [4500]MB
7	[]	[]	Normal	Manual	System FAT16 []MB
8	[]	[]	Normal	Manual	System FAT16 []MB
9	[]	[]	Normal	Manual	System FAT16 []MB
10	[]	[]	Normal	Manual	System FAT16 []MB
Describe							
Buffer :370MB				Free 0MB			
f{}: Modify +: Inc./Dec. Buffer !:Description :Exit							
Ver:XX ROGEV COMPUTERS							

Size setting **CAN NOT** be changed after Exit and Saved, and changes in File System is not recommended unless you are installing a new operating system in that partition. All other fields can be changed at will.

6. Tools



6-1 HDD COPY form IDE

Hard disk copy	
Hard disk space: 10200MB	
No	Description
(1)	Installed.
(2)	Not installed.
(3)	Type is different
(4)	Not installed
<<Copy from (1) to (2)>>	
<<Copy from (2) to (1)>>	
<<Copy from (1) to (2) (3) (4)>>	

A Supervisor only need to carefully setup one hard drive, and then use "Track to Track Copy" to create identical copies of the hard drive for use on other systems. However, the foremost requirement is that both the "Master" and the "Blank" hard drive have the same setup! (Only cylinder, head, sector and mode parameters needs to be identical)

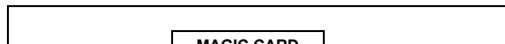
If you place the prepared hard drive as the first drive, the target disks should be installed as 2, 3 and 4. Magic Card will automatically identify the hard drive, and will only copy data to hard drives of the same type. If the type didn't match, Magic Card will automatically ignore it during the copying process.

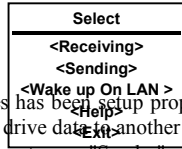
"Copying from (2) to (1)" is provided for the convenience of the user, who might have the first hard drive already installed and don't want to tear it out for the duplication process. Thus reducing the headache of duplication process.

6-2 HDD COPY from LAN

The following functions are only support Magic Card WOL/LAN Version.

6-2-1 Logging In

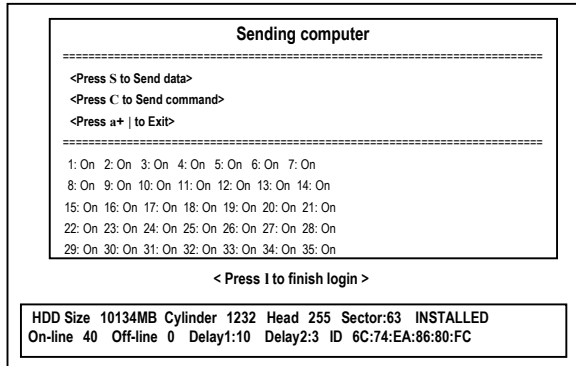




After one of the machines has been setup properly, you can use this function to transfer hard drive data to another computer.

Only the computer that acts, as "Sender" needs to use this function, and other "Receiver" machines only needs to reboot after they are done setup. When the "Receiver" machine is in "Logging In" mode, all other Magic Card enhanced machine will log in automatically IF they are in "Start up screen" or "Boot Menu".

After "Receiver" machines have logged in, then press I to save the Machine Registration data. The Supervisor then controls everything from the "Sender" machine.



6-2-2 Wake up On LAN

This function can allow you to remotely boot all the "Receiver" machines from the "Sender" machine. Saving you the time to turn each machine on or off.

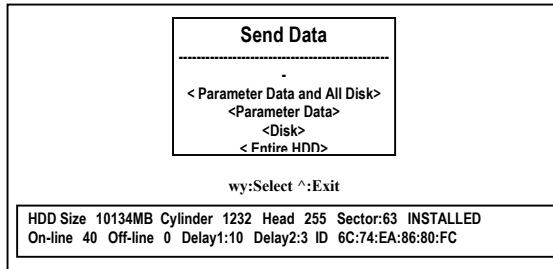
If you would like to use "Wake up On LAN" function, please check for the following requirement

1. Using ATX power supply

4. Connect the "Wake up On LAN" cable between the motherboard and Magic Card.
5. When first using this feature, you need to use the "Sender" machine to connect with other computer, and use "C Send Command" ? <Collect network card ID>. Then Magic Card will record down the connected machine's ID.
After that, you can simply choose <HDD COPY from Network> and then choose <Wake up On LAN> to power up all the connected machines.

6-2-3 Sending Data

After the machines have logged in, press S .The following screen will be shown.



- **Parameter Data and all Disk** (Often used when first installing).
When first installing the system, please choose this function to transfer Magic Card setup as well as HDD data to all machines.
- **Parameter Data** (Changing Magic Card setup on all machines).Can modify Magic Card information on all machines, saving you the time from changing the setup on every machine one by one
- **Disk** (When changing the data on one of the boot partition).
When updating one of the boot partition's data, like installing new application or program update, you can simply

- **Entire HDD**

All the Sectors on the hard drive.

```

Sending computer
=====
*<Sending Parameter data and all Disk>   Send Data 1547MB

Cylinder: 6  Head :25  Time:00:12:02
=====
1:On  2:On  3:On  4:On  5:On  6:On  7:On
8:On  9:On 10:On 11:On 12:On 13:On 14:On
15:On 16:On 17:On 18:On 19:On 20:On 21:On
22:On 23:On 24:On 25:On 26:On 27:On 28:On
29:On 30:On 31:On 32:On 33:On 34:On 35:On

a +|:Break w|y:Inc/Dec Delay Time {}|:PgUp/PgDn

HDD Size 4300 Cylinder 526 Head 255 Sector:63 INSTALLED
On-line 40 Off-line 0 Delay1:20 Delay2:10 ID 4C:54:2D:32:00:01
    
```

- Note: Shorter response time means faster speed, but that is still up to the network. Sometimes when the response time is too short, it can actually cause delay. You can change the response time setting with + / - keys.

6-2-4 Network Commands.

```

MAGIC CARD

Send Commands
=====
<Collect net card ID>
<Force select>
<Cancel Force select>
<Data/Time adjustment>
<All computer Reboot>
<Remote control backup>
<All computer Power Off>

<yw:Select ^:Exit>

HDD Size 4300 Cylinder 526 Head 255 Sector:63 INSTALLED
    
```

-
- **Collect Net Card ID:** Collect and store all Magic Card ID from the currently connected machines. This has two uses, the first is for automatic IP changing program, and the other use is for remote power on.
 - **Force Select:** Sends "Force Select" command to all of the connected machines. (Please refer to the "Force Select" function described before for more detail)
 - **Cancel Force:** Sends "Cancel Force Select" command to all of the connected machines.
 - **Date/Time Adjustment:** Synchronize all of the connected machines to the Date/Time setting of the "Sender" machine.
 - **Remote control backup:** This function enables the computers to Auto-Backup all the Partition Disk which was set as "Backup Recovery Type" in next boot by sending the parameter to all the login computers.
 - **All Computer Reboot:** Reboot all machines that are connected. (Including "Sender" machine)
 - **All Computer Power Off:** Shut down all connected machines, excluding "Sender".

6-3 Hard Disk Analysis

When executing this function, Magic Card will analyze your hard drive with S.M.A.R.T. technology and report back the findings. (Requires hard drive supporting S.M.A.R.T., which is pretty much all hard drive currently on the market).

6-4 Save CMOS Data

When administrator have changed the BIOS setup, please remember to execute this command to save the latest BIOS setup.

6-5 Analyze CMOS Data

future use. However when you are moving a Magic Card protected hard drive to another machine, you will “NEED” to use this command to analyze the CMOS data of that new machine, and update the original information.

6-6 Z.E.N. Works

Z.E.N. Works (Zero Effort Net Works) is a new function supported by Magic Card, which will prompt the computer being boot by Supervisor mode at the specific period of time. This function can be applied with the Z.E.N. Works program bundled in Novell v5.0 to maintain the computer system.

Zero Effort Net Works		
Mode	: Disable	Setting Z.E.N. Works by Just 1 time/Every day
Start time (Hour)	:	Setting startup Hour (0~23hr)
Start time (Minute)	:	Setting startup Minute (0~59min)
End time (Hour)	:	Setting end Hour (0~23hr)
End time (Minute)	:	Setting end Minute (0~59MIN)
System	:Last select	Setting Boot partition

6-7 Schedule Maintenance Utility

This is a new powerful function supported by WOL Card, which enable the computer itself to do the maintenance automatically. No more space wasted in HDD to keep the data and no influence onto the computer performance. Completely takes the advantage of all your HDD space.

WOL Card can help you do the computer maintenance automatically in the midnight. What you have to do is to setup the schedule in one computer (as the sending machine), and next day you will find all the other computers in the lab have become exactly the same as the sending one. This function makes computer

Just apply the function of Wake on Alarm in BIOS to auto power on the computer first. After then, by the schedule you set, the sending machine will begin to work and maintain all the computers accordingly through LAN when time is up. All the computers will automatically power off after mission accomplished.

Please be noted that executed <Collect net card ID> before applying this function.

Schedule		
Schedule Mode	: Disable	Setting Schedule by Just 1 time/Every day
Start time (Hour)	:	Setting startup Hour (0~23hr)
Start time (Minute)	:	Setting startup Minute (0~59min)
SNCOPY Delay 1	: 20	Setting SNCOPY delay time (99 = auto detect)
SNCOPY Delay 2	: 10	Setting SNCOPY delay time.
Wake up On LAN	: Enable	Initialize WOL function cross LAN
Date/Time adjustment	: Disable	Adjust Date/Time same to sending one
Entire HDD	: Disable	Sending entire sectors of HDD to receiving ones
Parameter data	: Disable	Sending parameters and commands only
Disk	: Win NT	Sending first partition
Disk	: Win2000	Sending second partition
Disk	: Win98	Sending third partition
Disk	:	Sending fourth partition
Disk	:	Sending fifth partition

7. FDISK Setup

If you wish to repartition your hard drive, you can simply choose this command instead of "Uninstall".

WARNING: When repartition a hard drive; you will lose ALL information stored on the hard drive, so please proceed with caution. To further prevent accidents, Magic Card will NOT update your hard drive partition information when you are setting up the partition information.

8. Upgrade Magic Card

Magic Card uses disks for updating firmware, and the process is very simple. Simply put the update disk into the floppy drive, and choose this command and follow the instruction on the screen.

You can download the latest driver from:

<http://www.rogev.com>

9. Uninstall Magic Card

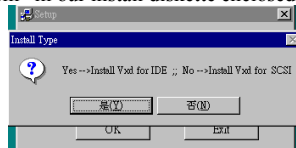
After you have installed the Magic Card, and before you have done any repartitioning.

You can use this command to remove Magic Card protection from the hard drive, and return it to its original state.

However, you have already used the hard drive and repartitioning with Magic Card, then the integrity of the data on the hard drive is not guaranteed.

10. Tips & Tricks

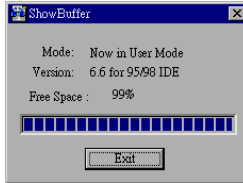
1. For best performance of your computer running under “Instant Restoration in User Mode”, please run the file “Setup.com” in our install diskette enclosed.



Screen then will pop up a dialogue box for you to choose either IDE Hard Drive [YES], or SCSI Hard Drive [NO].

This program will be listed in the path of **Start\Program\Show_B**.

Click [Show_B] to view the buffer zone in percentage. Your computer will make Beeping sound automatically as a siren when buffer zone percentage less than 10%.



2. If you find the percentage of buffer zone is decreasing very fast, please restart the computer and enter supervisor mode. Before entering into OS, press F8 (choose command prompt only) to stay under Dos. Insert the install diskette and execute A:\tools\dfg23.com. By running the defrag program, the system performance will be improved.
3. When you are installing the software, please make sure that there is NO virus (es) on the hard drive before executing the "Backup" command.
4. Magic Card will use at least 5KB of main memory when using "Instant Recovery" partition's "user mode" (depend on actual condition), and 1KB in other instances. "Backup Recovery" and "Normal Recovery" partitions will use absolutely no memory at all.
5. After installing the Magic Card, anti-virus software on each machine becomes unnecessary. You only need to make sure that there is no virus (es), when you are managing and updating the partition in "Supervisor Mode". Because sometimes some anti-virus software operates much like a virus, and can cause conflict with Magic Card. (Making Magic Card think that there's a boot virus).

11. NT ver. Instant Recovery Installation Guideline

- As soon as you got Magic Card NT Version., please follow the step-by-step guideline accordingly for quick installation.
1. Insert Magic Card on a free PCI expansion slot with right direction after power off the desktop PC.
 2. Power on the PC. Magic Card will display the hard drive information on the screen. According to the instructions to complete the installation.
 3. Now Magic Card will display the First Time installation menu. Please select “Start install”. PLEASE BE NOTED: As long as you will select “Instant Recovery Mode” under WIN-NT/2000, you will be asked to select “No, do not keep the data” only, and all the data in the hard drive will be deleted.
 4. After fill out all the hard drive partitioning settings under FDISK menu, you can now install WIN-NT/2000 under Supervisor Mode (b+f). The default Supervisor Password is set to be f key.
PLEASE BE NOTED: You MUST click b+f to complete installing OS in every time you will be asked to restart the PC.
 5. After WIN-NT/2000 installation completed, insert the **Install Diskette** in Drive A, and get into Supervisor Mode to install NT /Win2000 Driver (A:\Setup.exe). It may take a short period of time. Shown *“NT/Win2000 Driver Install successfully!!”* on the screen means NT/WIN2000 Driver installation completed.
 6. Restart the PC, all the installations done.