

Magic Card Ultima

User Manual

Table of Contents

System Requirements	2
Installation for Windows 98	3
Installation for XP	7
Magic Card Settings	11
Set protection	12
Set parameters	14
Password	15
CMOS recovery setup	18
Check mode	20
Restore	21
Save changes	21
About	21
System tray	21
Hotkeys	22
Uninstall	25
Contact information	26

System Requirements

Hardware:

- 80486 and above IBM compatible PC.
- Minimum 500 MB of free hard disk space
- 32MB of RAM
- CD-ROM
- Color monitor

Operating System Support:

- Windows 95 OSR2
- Windows 98/ME
- Windows NT4.0 with Service Pack 6
- Windows 2000
- Windows XP

Pre-installation Guidelines:

1. Prior to installation, please run the SCANDISK and DISK DEFRAGMENTER utilities provided by Windows for best performance. Also disable any anti-virus programs to avoid any possible conflicts.
2. When installing the card in a computer with windows XP, disable System Restore. To do so, right click on “**My Computer**”> **Properties**> **System Restore**> and check the box “**Turn off System Restore on all drives**”.
3. Before installing new software, or executing a backup function, always make sure it is virus free.

1. Installation For Windows 98

- 1.1 Turn on the computer and boot to Windows. Insert Magic Card Pro installation CD into the computer’s CD-ROM drive, and click on **Install** to start the installation. (If Autorun is not enabled, select Run from the Start Menu on the Taskbar. Next, type E:\Setup.exe, where E: is the designated CD-ROM drive.).You will receive the following screen (Fig. 1)



(Fig. 1)

1. Press ok.
2. The next screen that will appear will ask you to insert the USB plug. (Fig. 2)



(Fig. 2)

3. Please wait till Windows completes to identify the USB Hardware key.
4. Press ok.
5. Once the computer has installed the USB key, you can proceed in installing the software. The following screen will appear. (Fig. 3)

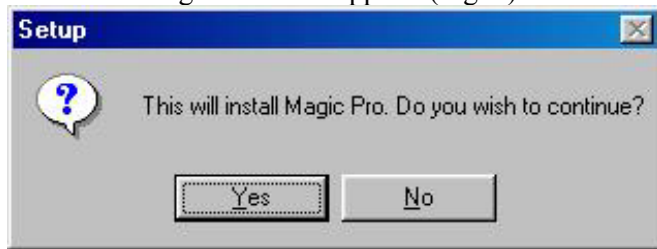
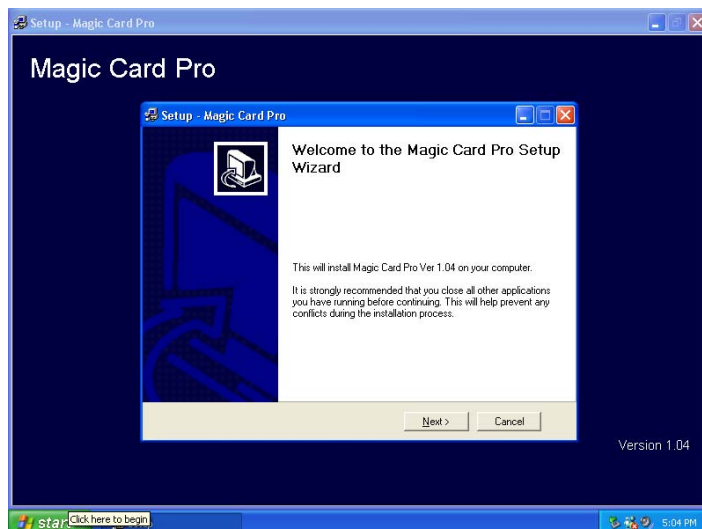


Fig. 3

6. Press Yes.
7. After completing the USB key installation, the following screen will appear guiding you to install the software.



(Fig. 4)

8. Select which type to install: **Express** or **Advanced** and click **Install** to continue.

Express Installation will install the program with the default setup and most common options. Recommended for most users. The default setting of **Express** Installation is to protect Drive C by instant recovery on every reboot. **Advanced Installation** allows users to setup the preferred options during the installation. Recommended for advanced users. Please refer to Chapter 2. **Magic Card settings.**

Install Magic Client the software comes with a Remote admin tool. You can decide if you want to install the client software now or install it later.

Magic Eye Program Management tool software. Please read the attached word file on CD in order to learn how to use the management software.

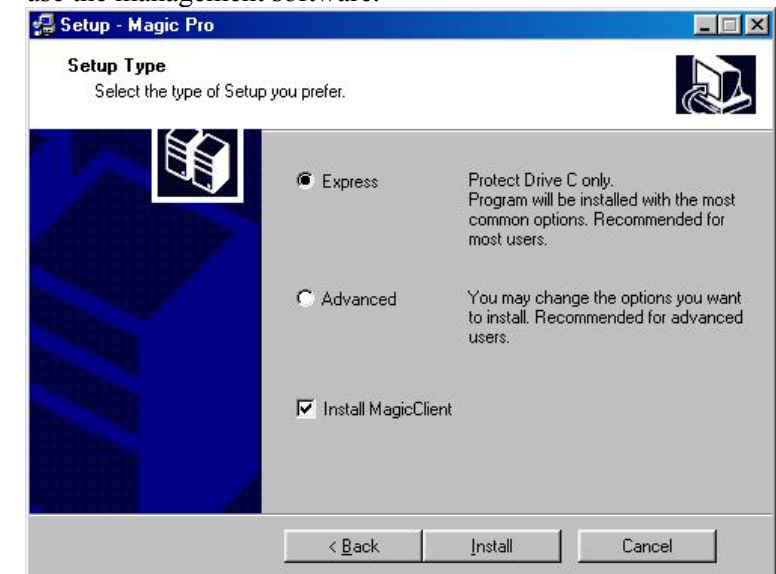


Figure 5

9. After a setup type is selected, you will be asked to restart your PC, click **Yes** to finish the installation and restart your computer to activate the program. Or click **No** to restart later. (Fig.6)

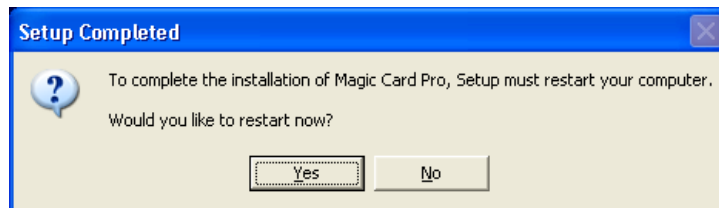


Figure 6

1.2 Installation for Windows XP.

In general the installation is the same. However, the only difference is in the hardware installation procedure.

Please follow the enclosed screens:

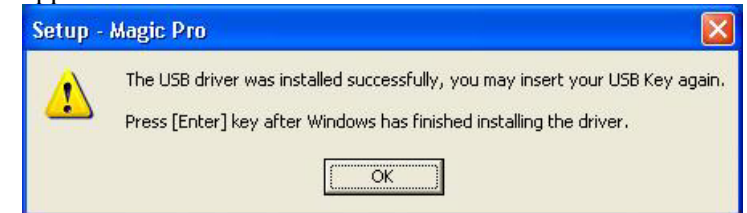
1. Turn on computer.
2. Insert CD in CD drive. The software will start the installation. Autorun is disabled; select Run from the Start Menu on the Taskbar. Next, type E:\Setup.exe, where E: is the designated CD-ROM drive.).You will receive the following screen.

3. The following screen will appear



4. Press OK

5. the following screen will appear



6. DO not press Ok till the computer finishes to install the USB key.

7. The following screen will appear



8. Press Next

9. The following screen will appear



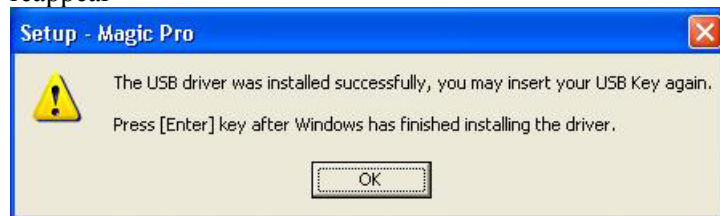
10. Press continue Anyway.

11. The following screen will appear.



12. Press finish.

13. The following screen will reappear



14. Press OK

15. Continue installation as appears on page 4

2. Magic Card Settings

Options can be changed during Custom Installation and can be accessed anytime by right clicking the Magic Card icon on the Windows Taskbar. (Fig. 7)



Figure 7

A Main Menu appears. (Fig.8) Click **Magic Card settings** enter password in the dialog box, click OK. (Default password is **Magic**.) All settings in this menu take effect after saving. Some settings will be activated after the computer is rebooted.

In the event that you remove the USB key during the use of your computer you will receive an error message telling you to reinsert your USB Key.

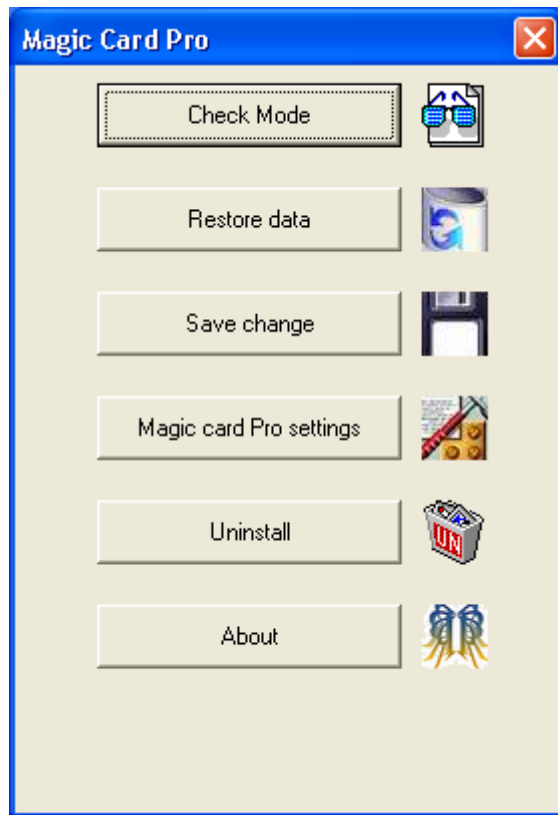


Figure 8

2.1 Set Protection

This menu displays the Disk Information, file system attributes, used disk space and protected status of each partition. Default protected partition is Drive C. selecting a check box will protect a partition. (Fig. 9)

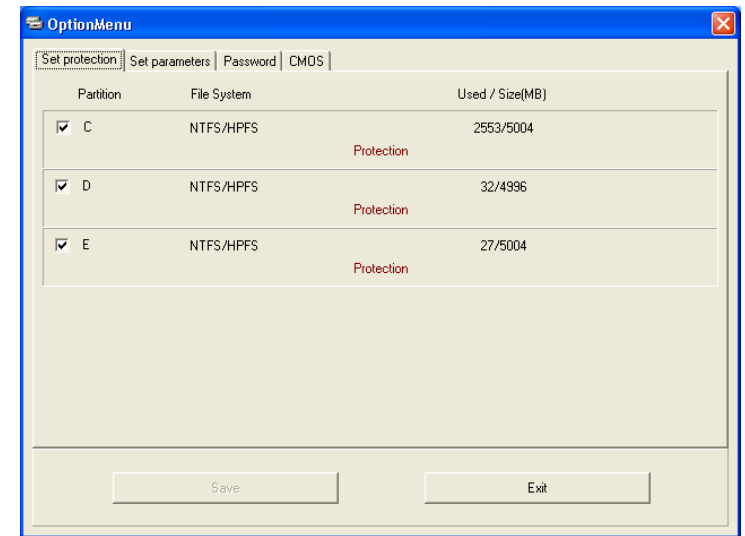


Figure 9

Note: Magic Card Pro will only protect the First physical Hard Disk.

2.2 Set Parameters

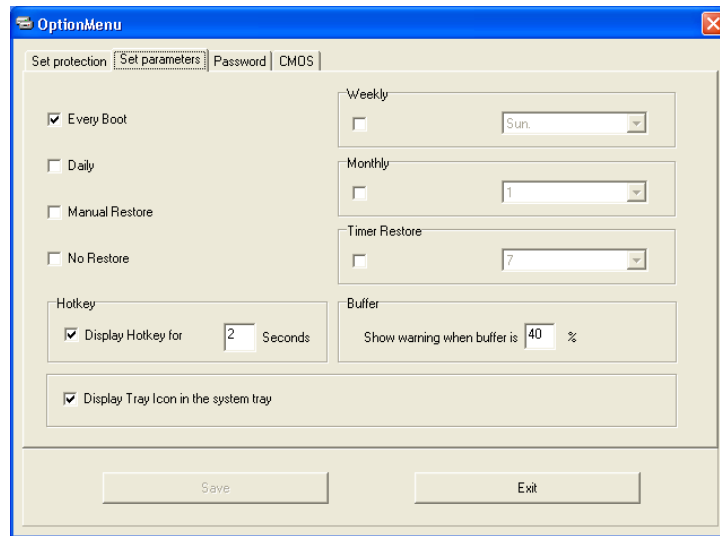


Figure 10

- 2.2.1 Every boot:** The system will automatically restore its original state or last backup on every reboot. **Default** setting is **Every Boot**.
- 2.2.2 Daily:** The system will auto restore its original status or last backup at the first boot once a day.
- 2.2.3 Manual Restore:** All changes will be kept temporarily. The system will be restored to its original status after activating <Restore data> function by right-clicking the Magic Card icon on the Windows taskbar. The changes will be saved permanently after selecting <Save

change> function by right-clicking the Magic Card icon on the Windows taskbar. A Password is required for both options. (Fig.8)

- 2.2.4 No Restore:** Disables the Restore function.
- 2.2.5 Weekly:** The system will be auto restored to its original status or last backup at the first boot of a given day (Sunday ~ Saturday) every week.
- 2.2.6 Monthly:** The system will be auto restored to its original status or last backup at the first boot of a specified date (Date 1st~31st) every month.
- 2.2.7 Timer Restore:** The system will be auto restored to its original status or last backup according to a preset schedule.

Note: When a Restore Mode is changed, the following windows box will appear. You may select **Restore** to restore its original status, or select **Backup** to save the changes in the data (Fig. 11)

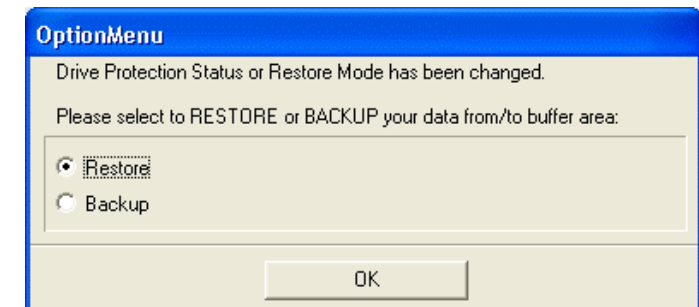


Figure 11

- 2.2.8 Hotkey:** You may enter the card menu before the operating system. In order to enter the menu,

press the F11 Hot Key. You may do so only for a predefined interval. Default interval is 2 seconds.

2.2.9 Buffer: The buffer is the space where the card saves all changes. Once the buffer fills, a warning message will be displayed ,reminding you to reboot your computer. Default buffer size is 40%.

2.2.10 Display tray icon in system tray: Select the check box and the Magic Card tray icon will be displayed on the Windows taskbar. Press <Ctrl+Alt+F11> and the Magic Card main menu will appear in the event that the tray icon was disabled.

2.3 Password

The default Password is **Magic**. You may use up to 10 characters for the Password. (Fig. 12)

Note: The Password ensures the security of Magic Card Pro. The password can be used for all functions of the Magic Card. Please keep the Password in a secure place or else you will have to reinstall everything!

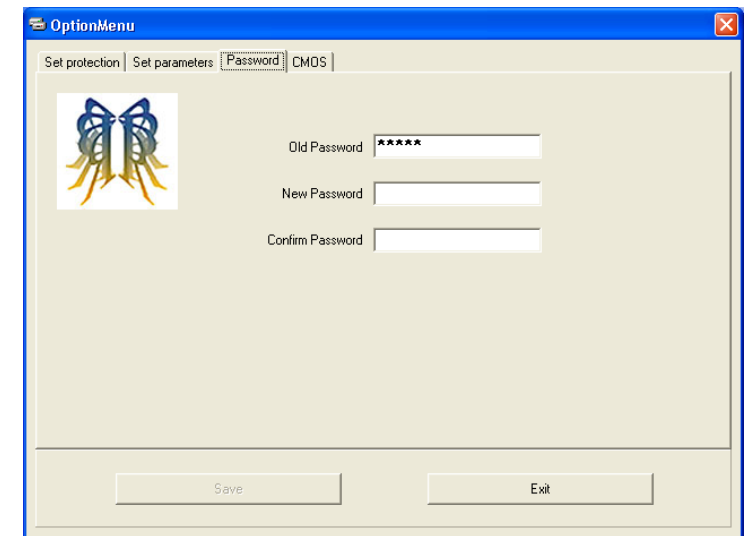


Figure 12

2.4 CMOS Recovery Setup

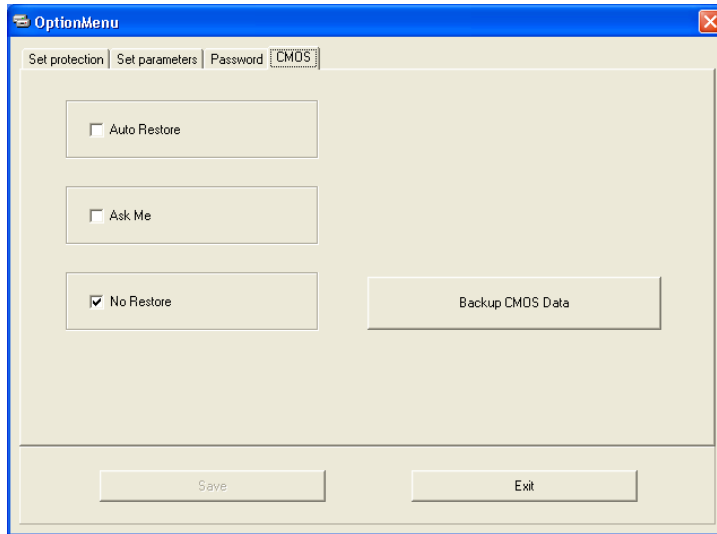


Figure 13

2.4.1 CMOS - Auto Restore:

Enable: To protect CMOS data from being changed. The system will auto restore CMOS data when this check box is enabled. (Fig. 13)

2.4.2 CMOS – Ask Me

Enable: To protect CMOS data from being changed. The System will display a selection menu upon booting, for you to execute **Restore**, **Backup** or **Analyze** when CMOS data has been changed. (Fig. 14) **Analyze** CMOS data compares the current CMOS data and the saved CMOS data on the hard drive for

differences. You may run this option after some settings or peripherals have been changed or replaced. **Note:** The system will reboot twice to proceed with CMOS analysis.

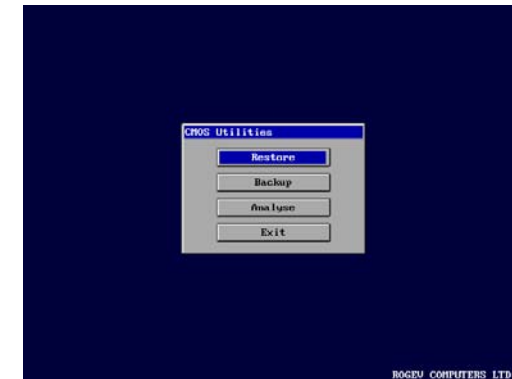


Figure 14

2.4.3 CMOS – No Restore

CMOS data can be changed any time if this check box is enabled. **Default** setting is enabled. (Fig. 13)

Note: To change CMOS restore mode from <No restore> to <Auto restore>, please execute **CMOS Backup** first to make sure your CMOS data is the latest version. (Fig. 13)

3. Check Mode

Clicking on Check Mode, will display the information of current mode and free buffer percentage. (Fig. 15)

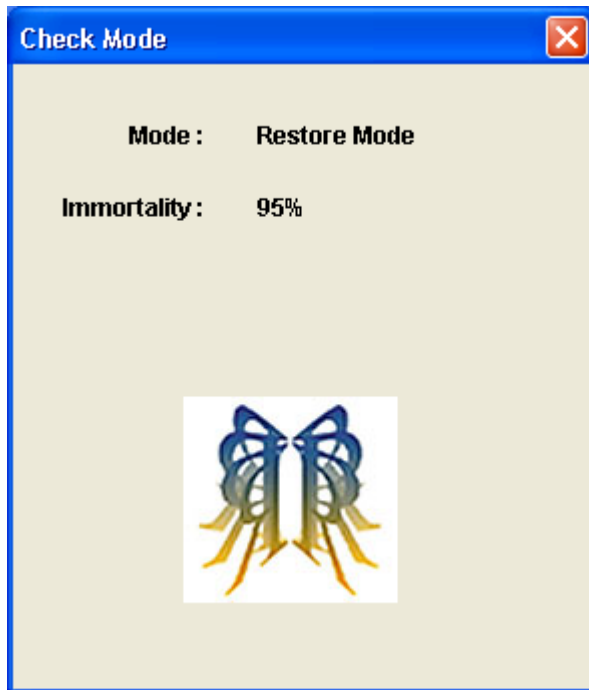


Figure 15

4. Restore Data

Instantly executes restore function regardless of the current setting. A Password is required to execute this option . The System will reboot to restore.

5. Save Change

Instantly executes backup function regardless of the current setting. A Password is required to execute this option . The System will reboot to backup.

6. About

Displays Magic Card Pro version.

7. System Tray:

When the Magic Card icon is Blue, the Restore mode is activated. When moving the mouse over the Magic Card icon, you will see the protection status and Free Space percentage of the buffer. (Fig.16)



Figure 16

When the Magic Card icon is red, the restore mode is inactivated. When moving the mouse over the Magic Card icon, you will see the protection status. (Fig.17)



Figure 17

8. Hotkey

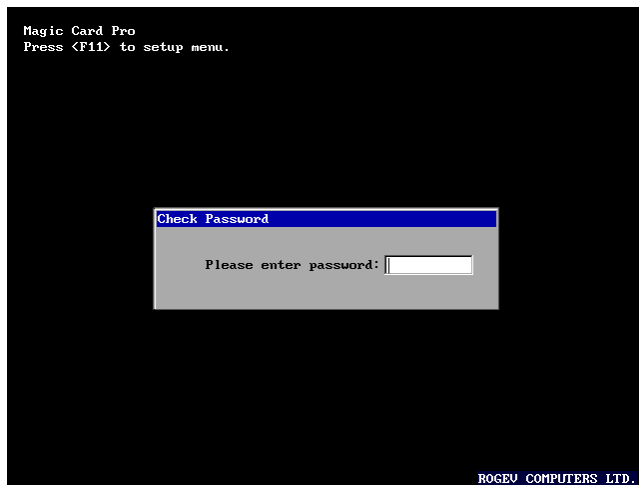


Figure 18

- 8.1 When the Magic Card has completed the installation, the following message [**Magic Card Pro Press <F11> to setup menu**] will be displayed upon each reboot. (Fig. 18) The main function of this hotkey is mainly used for troubleshooting or if it is difficult to enter Windows.

- 8.2 Press <F11> and enter your password in the dialog box that is displayed, Click OK to enter the Setup menu. Default password is **Magic**. (Fig. 19)



Figure 19

- 8.2.1 **Restore Data:** Executes Restore function instantly. The Restore function allows you to restore your crashed Windows to the last backed up status. We recommend using this function when Windows is no longer accessible. (Fig.19)

8.2.2 CMOS Utilities:

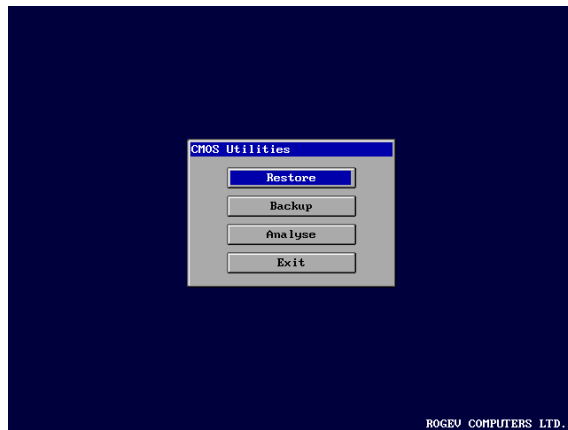


Figure 20

Restore: Restore CMOS data when it has been changed.

Backup: Backup CMOS data when it has been updated.

Analyse: Analyze CMOS data - compares current CMOS data and the saved CMOS data on the hard drive for differences. You may run this utility when some settings or peripherals have been changed or replaced or when BIOS version have been updated.

Exit: Exits CMOS tools.

8.2.3 Version Info: Displays Magic Card version. (Fig.19)

8.2.4 Exit: Exits Magic Card setup menu. (Fig.19)

9. Uninstall

Uninstalling Magic Card from your computer will not cause any damage to your hard disk. All data and partitions will be restored to their original state when Magic Card was installed or when data was last backed up.

Please follow the following steps in order to make sure you uninstall the card properly. Not following these steps will cause many problems

1. Press CTRL+ALT+F11 simultaneously
2. Select "Magic Card Ultima settings", type in your password
3. Go in to "Set Parameters" tab
4. Check the box next to "No restore"
5. Select save and than "OK"
6. Select "OK" in the "Restore or Backup" screen
7. The computer will reboot
8. After the computer reboots, press CTRL+ALT+F11 simultaneously.
9. Select uninstall from the main screen
10. Select "OK" in the "Restore or Backup" screen. The computer will restart. Allow the computer to fully reboot and **Do not power off the computer in any circumstance!!**
11. After restart you will be prompt to either reboot or power off the computer, select power off.

10. Contact Information

Rogev Computers, Ltd.

[Http://www.rogev.com](http://www.rogev.com)

Notes